



### **Idea Plan**

**No. IP 729-31**

### **Backyard Rabbit Hutches**

This Idea Plan is intended to provide educational information and ideas concerning housing and equipment for small numbers of rabbits. The following attached drawings are based on historical plans and may not meet design and construction standards for your area:

Hutches for Rabbits (USDA 6137)

Rabbit House (USDA 6233)

If you decide to build a facility similar to any of these plans, be sure to check building requirements for your area. Your local building inspector, engineer, building supplier, or building contractor can help you determine what is a safe and legal facility for housing rabbits in your area. In addition to the rules and regulations covering design and construction of buildings, be sure to consider how you will handle the manure and potential nuisance problems for neighbors, including flies, odor, and noise.

The Department of Agricultural and Biological Engineering at Penn State has a variety of educational material available related to agricultural and biological engineering. This material is intended to help Pennsylvania farmers and others develop buildings and facilities for modern, environmentally-compatible farm facilities. The material can be used in conjunction with county extension staff, builders, suppliers, consulting engineers, the Natural Resources Conservation Service, financial management advisors, farm lenders, veterinarians, and others to assemble a facilities plan suitable for local conditions.

Publications are available in the areas of agricultural safety and health, animal housing systems, building and farmstead planning, crops and greenhouses, machinery systems and tractors, residential housing, soil and water resources, and solid waste management. Contact your county Penn State Extension Office for more information on these subjects. You can also obtain an index of publications concerning the above areas by calling, writing, faxing or e-mailing:

Department of Agricultural and Biological Engineering  
246 Agricultural Engineering Building  
University Park, PA, 16802-1909  
Telephone: 814-865-7685  
Fax: 814-863-1031  
E-mail: [agbioeng@psupen.psu.edu](mailto:agbioeng@psupen.psu.edu).

(over)

For more information, the following comprehensive handbook covering design and construction of small pole buildings is available:

NRAES-01—Pole and Post Buildings, Design and Construction (1984).  
\$6.00 (Contact office below for current pricing).

Order from NRAES, Cooperative Extension, B-16 Morrison Hall, Ithaca, NY14853  
(607)255-7654 FAX: (607)254-8770 Email: NRAES@cornell.edu

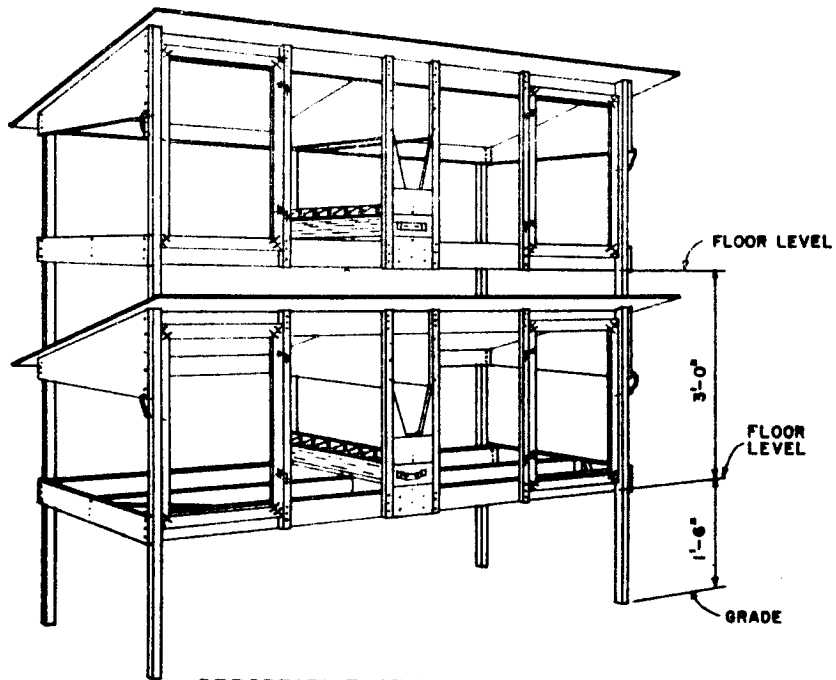
Information may also be obtained by contacting the following:

The American Rabbit Breeders Assoc., Inc.  
1925 S. Main, Box 426  
Bloomington, IL 61701

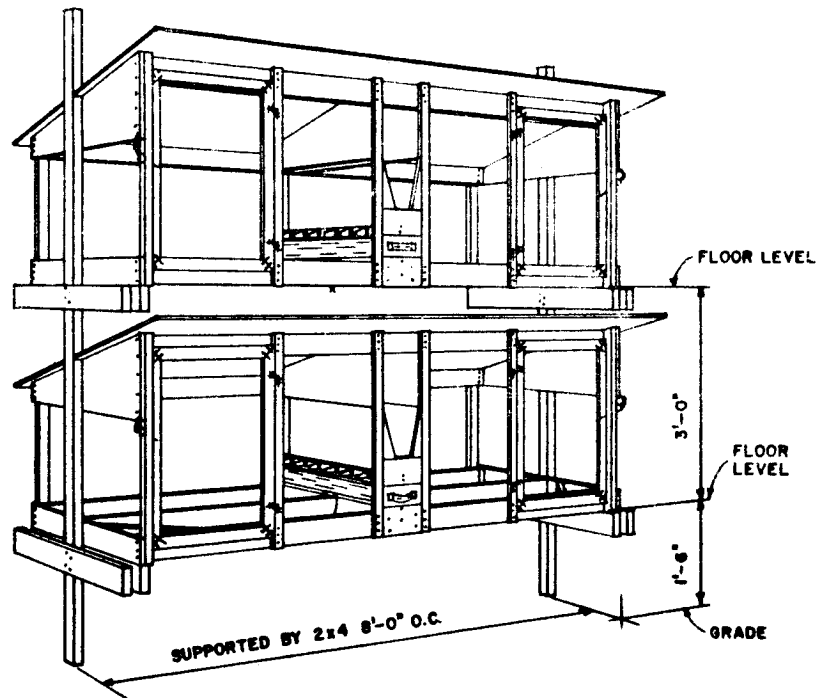
---

This publication is available in alternative media on request.

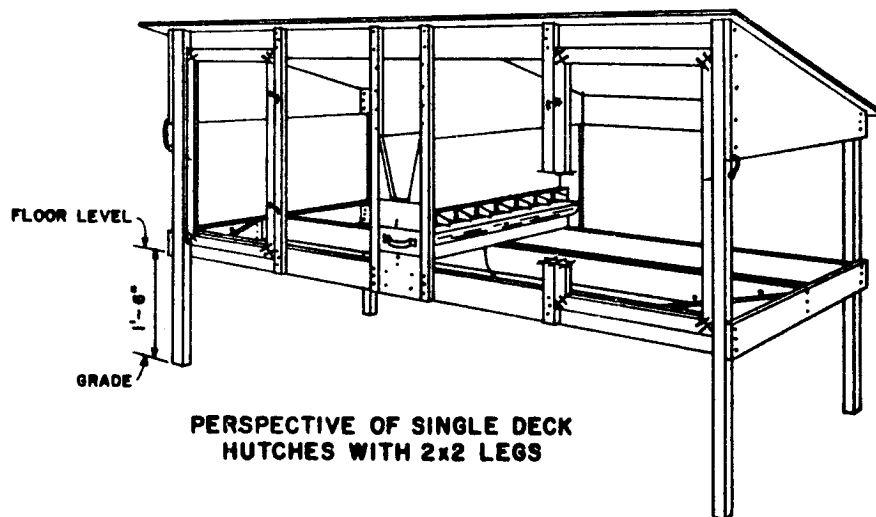
The Pennsylvania State University is committed to the policy that all persons shall have equal access to programs, facilities, admission, and employment without regard to personal characteristics not related to ability, performance, or qualifications as determined by University policy or by state or federal authorities. The Pennsylvania State University does not discriminate against any person because of age, ancestry, color, disability or handicap, national origin, race, religious creed, sex, sexual orientation, or veteran status. Direct all inquiries regarding the nondiscrimination policy to the Affirmative Action Director, The Pennsylvania State University, 201 Willard Building, University Park, PA 16802-2801; tel. (814) 863-0471; TDD (814) 865-3175.



PERSPECTIVE OF DOUBLE DECK HUTCHES WITH 2x2 LEGS



PERSPECTIVE OF DOUBLE DECK HUTCHES HUNG ON 2x4 POSTS 8'-0" O.C.



PERSPECTIVE OF SINGLE DECK HUTCHES WITH 2x2 LEGS

NOTE:  
POULTRY NETTING NOT SHOWN  
ON THESE PERSPECTIVES.

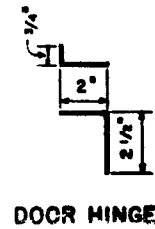
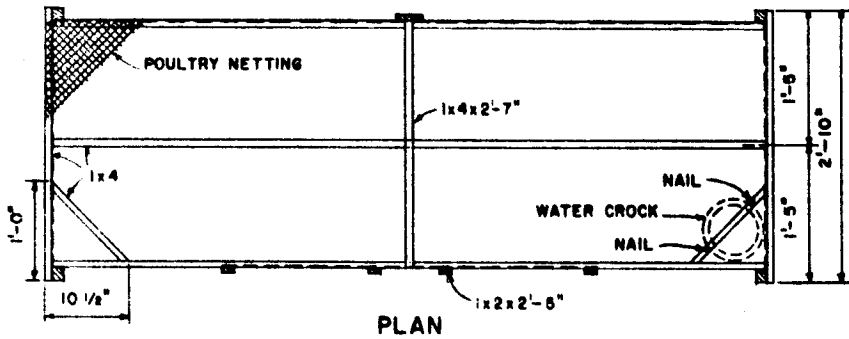
COOPERATIVE EXTENSION WORK IN  
AGRICULTURE AND HOME ECONOMICS  
THE PENNSYLVANIA STATE UNIVERSITY  
AND  
UNITED STATES DEPARTMENT OF AGRICULTURE COOPERATING

HUTCHES FOR RABBITS

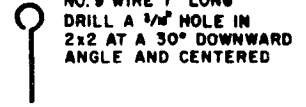
N.M. & CAL. '72 6137 SHEET 1 OF 4

BASED ON NEW MEXICO PLAN

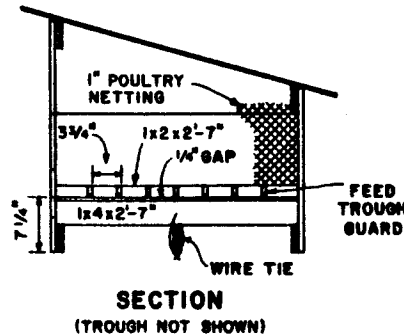
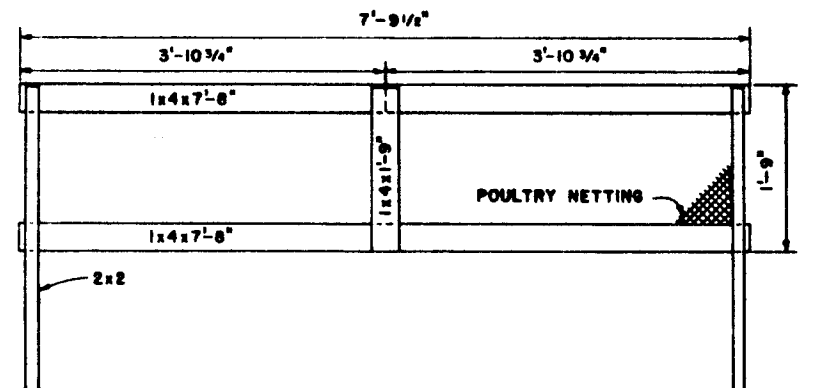
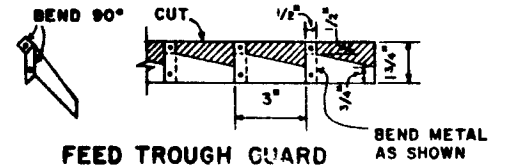
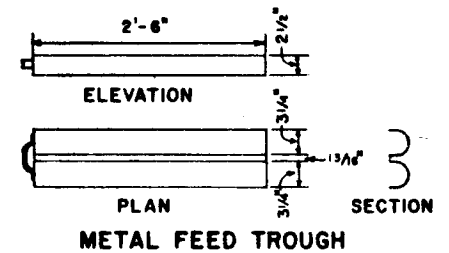
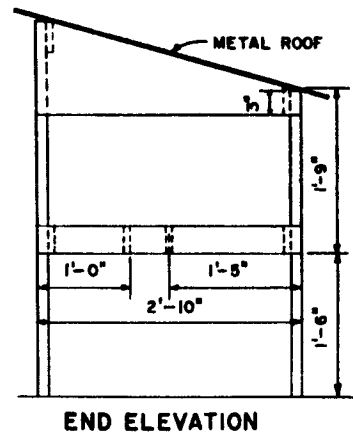
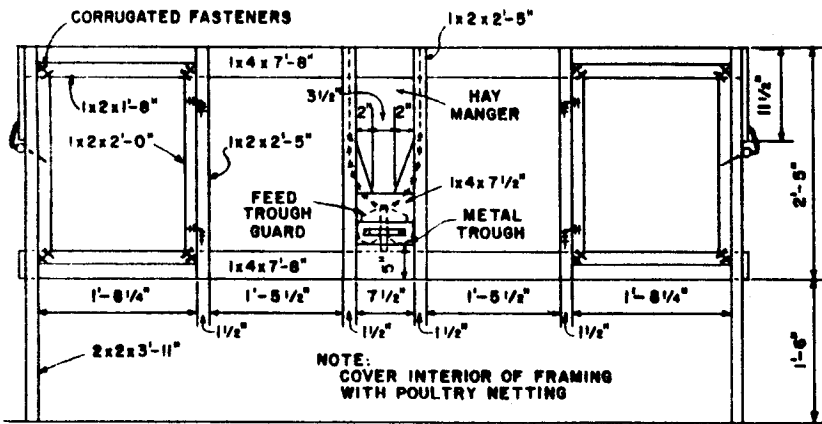
ORDER NO. 729-6137



NO. 9 WIRE 8 1/4" LONG  
DRIVE 3/4" END INTO  
DOOR FRAME AND  
STAPLE TO DOOR  
AND JAMB



NO. 9 WIRE 7" LONG  
DRILL A 3/16" HOLE IN  
2x2 AT A 30° DOWNWARD  
ANGLE AND CENTERED



COOPERATIVE EXTENSION WORK IN  
AGRICULTURE AND HOME ECONOMICS  
THE PENNSYLVANIA STATE UNIVERSITY

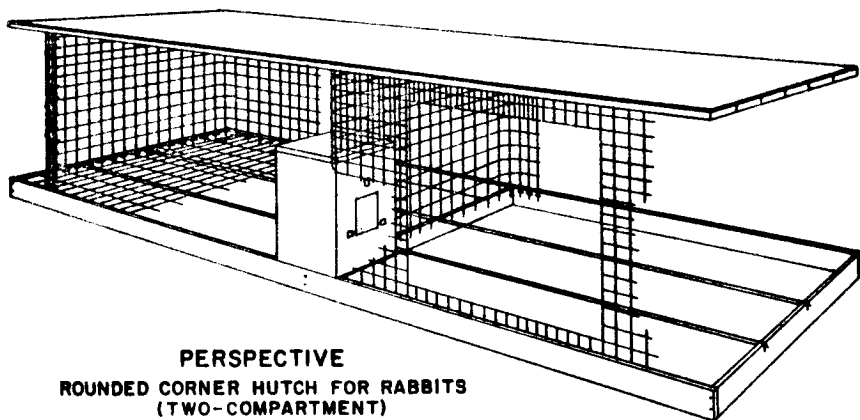
AND  
UNITED STATES DEPARTMENT OF AGRICULTURE COOPERATING

**HUTCHES FOR RABBITS**

N.M. & CAL. '72 6137 SHEET 2 OF 4

ORDER NO. 720-6137

BASED ON NEW MEXICO PLAN



PERSPECTIVE  
ROUNDED CORNER HUTCH FOR RABBITS  
(TWO-COMPARTMENT)

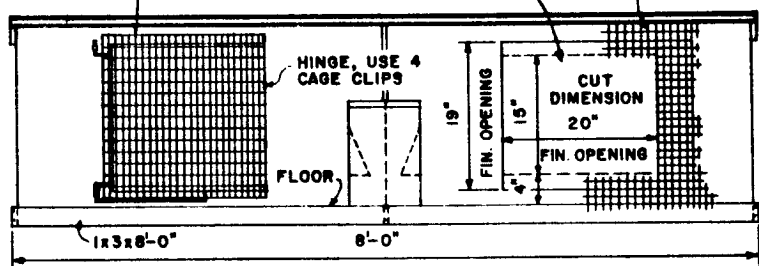
NOTES:

- A. ASSEMBLE WOOD FRAME AND COUNTERSINK METAL FLOOR SUPPORTS.
- B. STAPLE THE 16-GAUGE, 30-INCH BY 8-FOOT GALVANIZED WIRE MESH TO THE FRAME, USING 1-BY 1/2-INCH MESH FOR SMALL AND MEDIUM BREEDS OF RABBIT, AND 1-BY 5/8-INCH FOR THE LARGER BREEDS.
- C. THE CURVED WALLS ARE FORMED FROM 1/2-BY 1/2-INCH GALVANIZED WIRE MESH. CUT THE TWO BOTTOM STRANDS OF WIRE, LEAVING 1-INCH VERTICAL PROJECTIONS. THE 1-INCH PROJECTIONS ARE PLACED INSIDE THE WOOD FLOOR FRAME, FORMING TWO COMPARTMENTS, AND STAPLED.
- D. CUT THE DOOR OPENINGS BEGINNING 4-INCHES FROM THE FLOOR. THE OPENING IS REINFORCED BY TURNING 2-INCHES UP ON THE INSIDE ACROSS THE TOP AND 2-INCHES DOWN ON THE INSIDE ACROSS THE BOTTOM.
- E. CUT EVERY THIRD STRAND ON THE TOP TWO HORIZONTAL STRANDS OF THE SIDE AND REAR WALLS. THE 2-INCH TABS FORMED ARE BENT IN AT RIGHT ANGLES ACROSS THE BACK AND IN GRADUATED DEGREES ON SIDES TO GIVE A 2-INCH PITCH TO THE ROOF. TURN THE CAGE SECTION UPSIDE DOWN ON THE ROOF SHEATHING, THAT HAS BEEN ASSEMBLED WITH CORRUGATED FASTENERS, AND STAPLE. COVER ROOF WITH A 3-FOOT WIDE PIECE OF 90-POUND ROOFING FELT AND NAIL.
- F. THE DOORS ARE OF 1-BY 1-INCH WIRE MESH CUT 21-BY 24-INCHES. TO GIVE RIGIDITY TURN DOWN 1-INCH ON INSIDE ACROSS THE TOP, AND TURN UP 2-INCHES ON INSIDE ACROSS THE BOTTOM. MAKE THE DOOR FASTENERS AS SHOWN. USE ALUMINUM CAGE CLIPS FOR ALL FASTENERS AND HINGES. HINGE DOOR ON FEEDER SIDE WITH 4-CAGE CLIPS. INSTALL DOOR FASTENER WITH SMALL WIRE TIES AT THE 1 3/4- AND 1 1/8-INCH SHANKS, SO FASTENER OVERLAPS THE EDGE OF THE CLOSED DOOR TO MAKE IT SECURE.

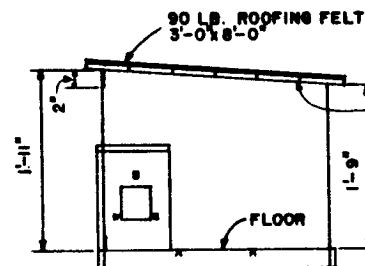
DOOR FROM 24 GA. 1 1/2" MESH CUT 21 1/2" x 24" WITH 1" TURNED DOWN ON TOP AND 2" TURNED UP ON BOTTOM FOR 21 1/2" x 21" DOOR.

DOOR OPENING, MAKE 2" FOLD TOP AND BOTTOM

TWO PIECES 1 1/2" x 24 GA. WIRE MESH 2'-0" x 13'-0"



FRONT ELEVATION

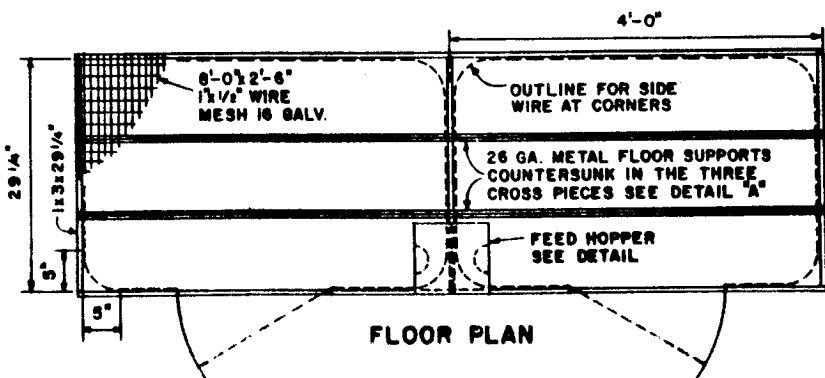


SECTION

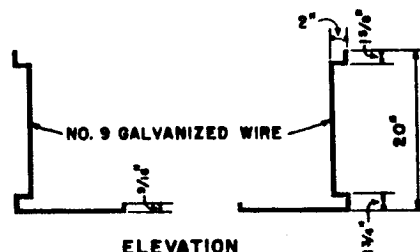


NOTE:  
TWO METAL FLOOR SUPPORTS ARE REQUIRED

DETAIL "A"  
METAL FLOOR SUPPORT

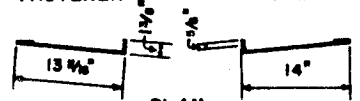


FLOOR PLAN



ELEVATION

LEFT DOOR FASTENER RIGHT DOOR FASTENER



PLAN  
DOOR FASTENERS

COOPERATIVE EXTENSION WORK IN  
AGRICULTURE AND HOME ECONOMICS  
THE PENNSYLVANIA STATE UNIVERSITY

AND  
UNITED STATES DEPARTMENT OF AGRICULTURE COOPERATING

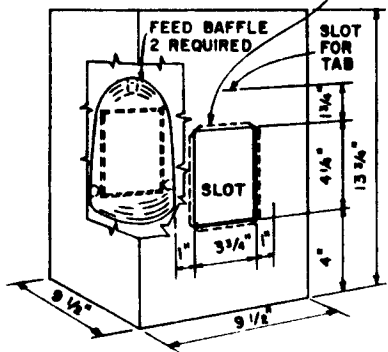
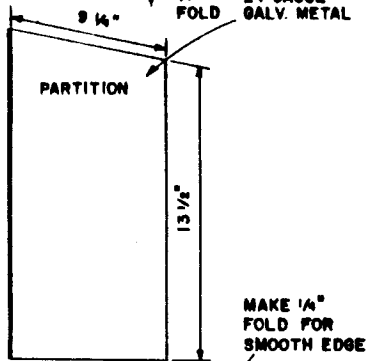
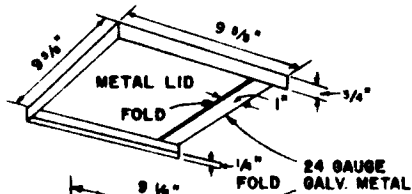
HUTCHES FOR RABBITS

R.M. & CAL '72 6137 SHEET 3 OF 4

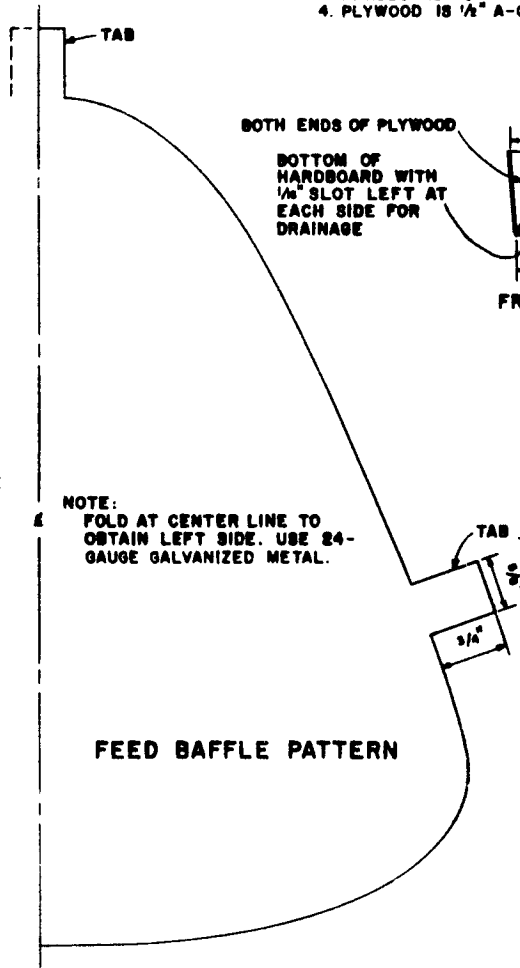
ORDER NO. 729-6137

BASED ON USDA LEAFLET NO. 378

- NOTE:
1. COVER ALL EXPOSED "CHEWABLE EDGES" WITH METAL.
  2. ALL PLYWOOD TO PLYWOOD JOINTS SHOULD BE NAILED AND GLUED.
  3. HARDBOARD IS 1/4" TEMPERED.
  4. PLYWOOD IS 1/4" A-C EXT. DFPA

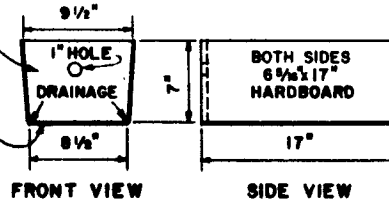


FEED HOPPER

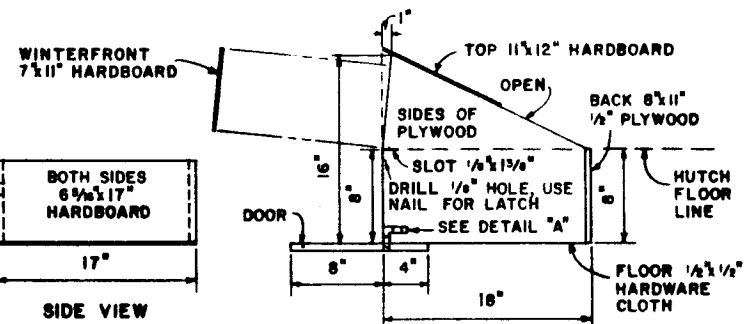


FEED BAFFLE PATTERN

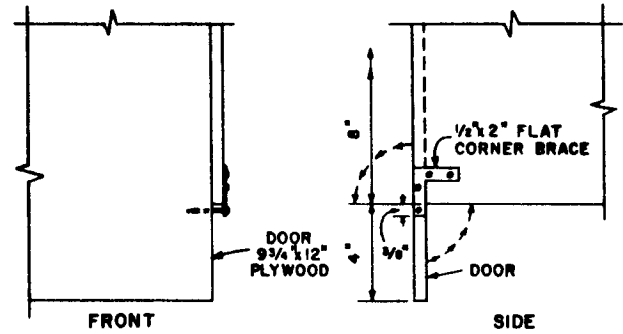
BOTH ENDS OF PLYWOOD  
BOTTOM OF HARDBOARD WITH 1/8" SLOT LEFT AT EACH SIDE FOR DRAINAGE



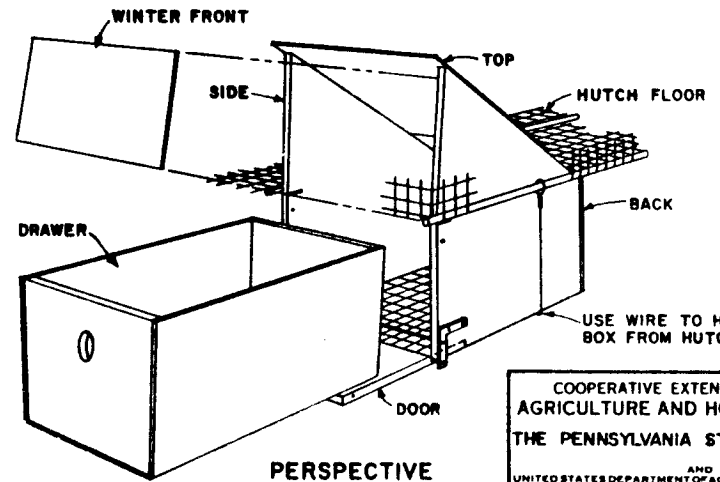
RABBIT NEST BOX DRAWER



RABBIT NEST BOX-SIDE VIEW



DETAIL "A"



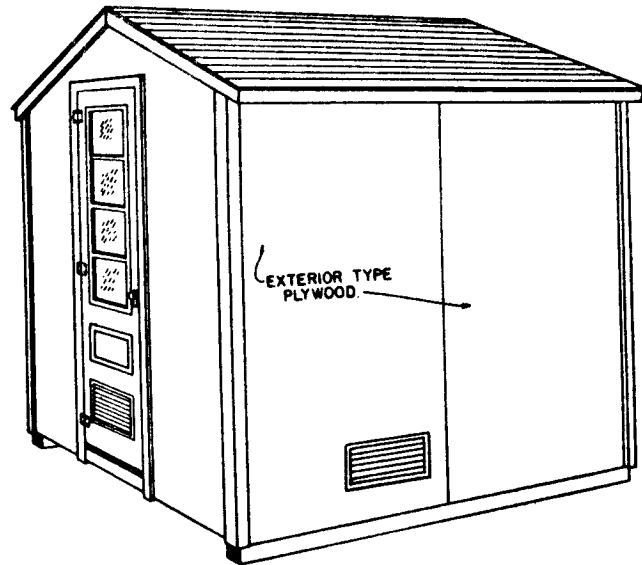
PERSPECTIVE RABBIT NEST BOX

- NOTES:
- A. THE FEED HOPPER, MADE FROM A 5-GALLON CAN, SUPPLIES FEED TO BOTH UNITS OF A DOUBLE HUTCH. BEGINNING 4 1/4-INCHES FROM THE BOTTOM OF THE CAN, CUT AN OPENING 3 3/4-INCHES HIGH AND 3 1/4-INCHES WIDE. TURN INSIDE 1/4-INCH TO MAKE SMOOTH EDGE.
  - B. THE BAFFLE, LID, AND DIVIDER ARE MADE FROM 24-GAUGE GALVANIZED METAL.
  - C. CUT THE BAFFLE USING FULL SIZE 1/2 PATTERN SHOWN, FOLD AT CENTERLINE TO OBTAIN OTHER 1/2-PATTERN. INSERT TABS THROUGH SLOTS SHOWN AND BEND.
  - D. FOR THE LID: CUT METAL 1-INCH LARGER, ON ALL SIDES, THAN TOP OF CAN. ON THREE SIDES 1/4-INCH IS FOLDED BACK TO MAKE A SMOOTH EDGE, AND THEN 3/4-INCH IS BENT DOWN AT RIGHT ANGLES TO HOLD THE LID IN PLACE. THE 1-INCH IS FOLDED FLAT ON THE FOURTH SIDE FOR RIGIDITY. THIS ALLOWS THE CARETAKER TO SLIDE THE LID OFF THE CAN WHEN REPLENISHING THE SUPPLY OF PELLETS.

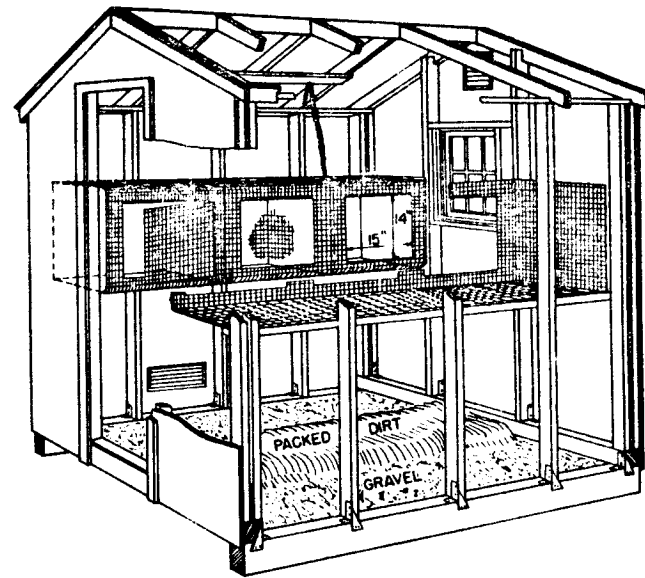
COOPERATIVE EXTENSION WORK IN AGRICULTURE AND HOME ECONOMICS  
THE PENNSYLVANIA STATE UNIVERSITY  
AND UNITED STATES DEPARTMENT OF AGRICULTURE COOPERATING

**HUTCHES FOR RABBITS**

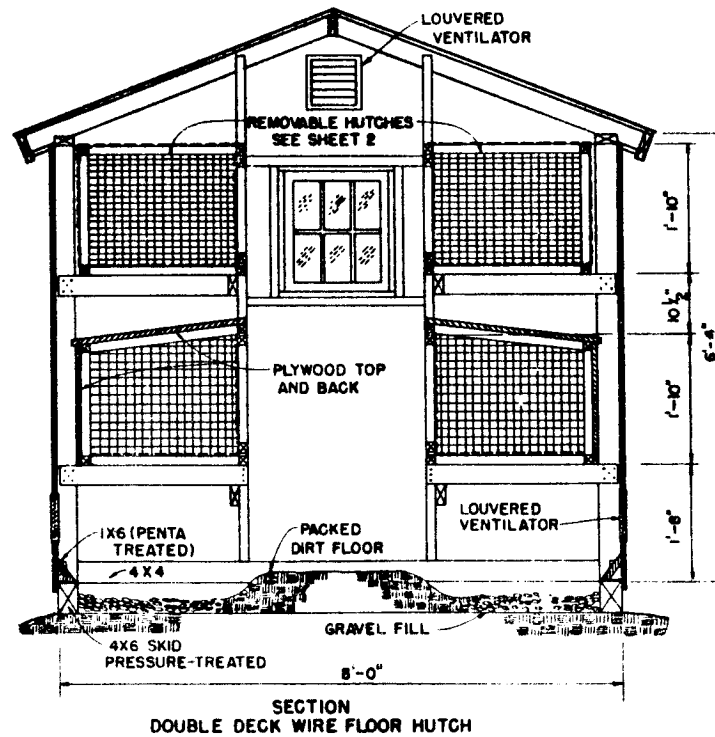
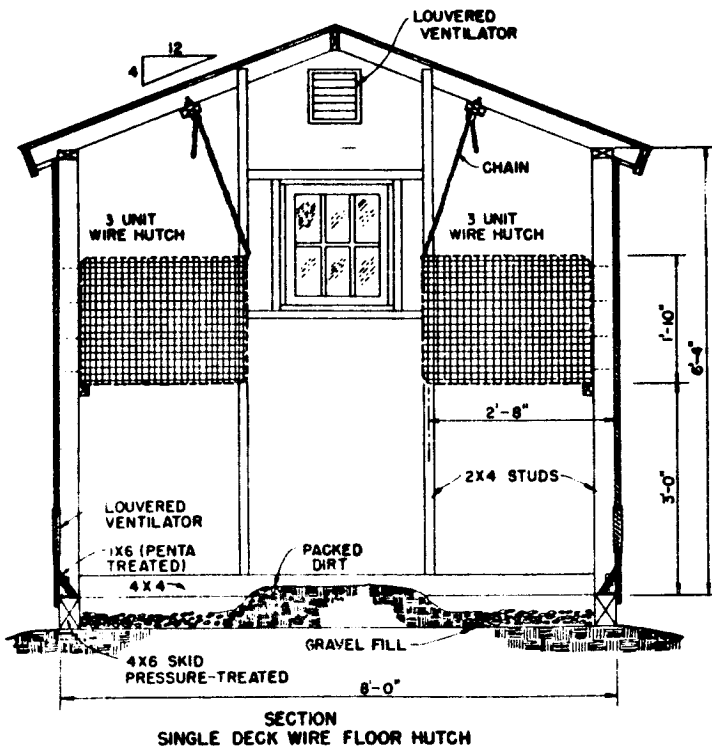
N. M. S. CAL. '72 6137 SHEET 4 OF 4  
ORDER NO. 729-6137



PERSPECTIVE OF RABBIT HOUSE



CUTAWAY VIEW OF 8'X8' RABBIT HOUSE  
SINGLE DECK WIRE FLOOR HUTCH.



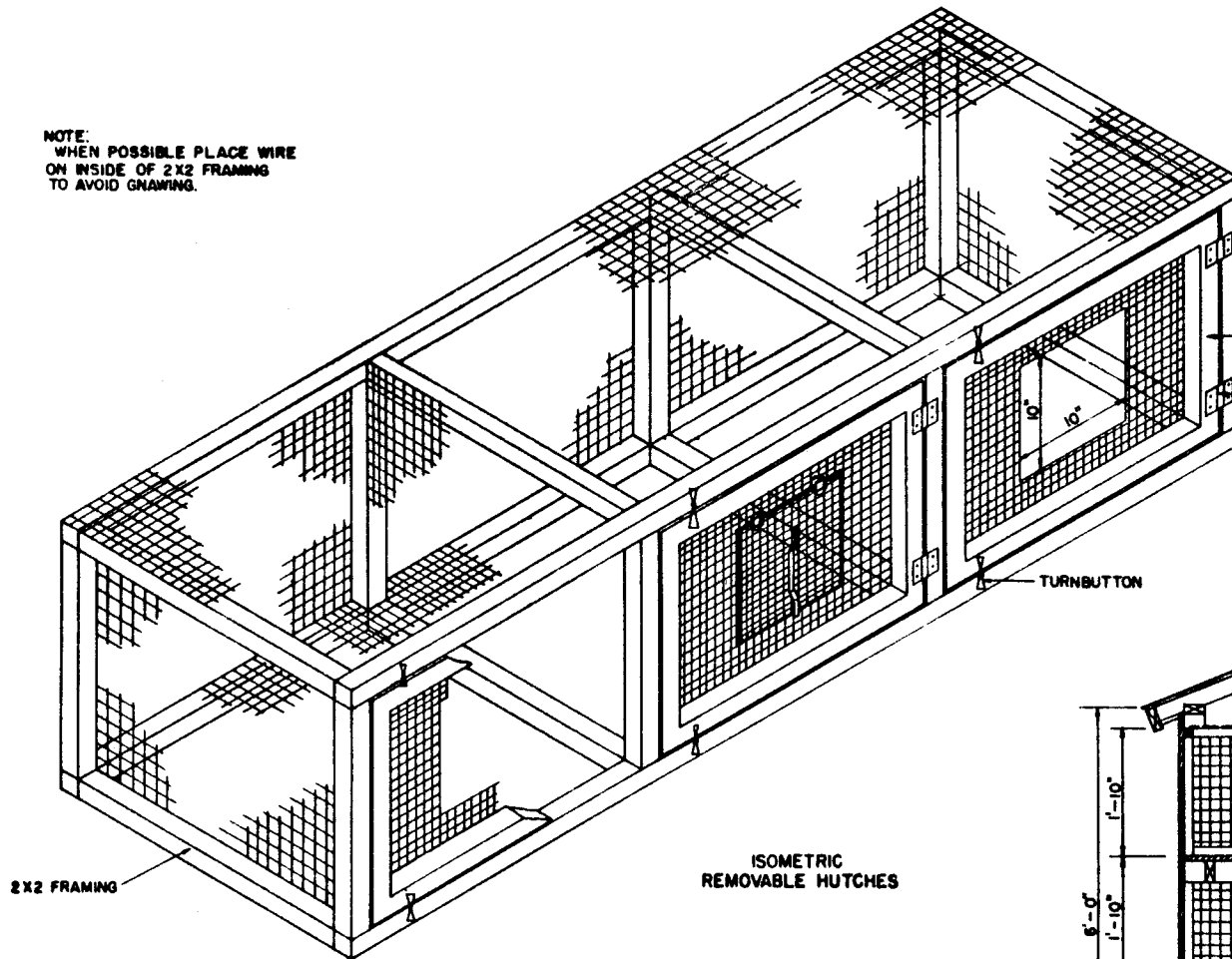
NOTE:  
BASED ON UNIV. OF WISCONSIN  
PLAN NO. WP 5708.  
CONSULT LOCAL HEALTH AND  
BUILDING CODE AUTHORITIES  
BEFORE STARTING CONSTRUCTION.



|   |      |              |
|---|------|--------------|
| COOPERATIVE EXTENSION WORK IN<br>AGRICULTURE AND HOME ECONOMICS |      |              |
| THE PENNSYLVANIA STATE UNIVERSITY                               |      |              |
| AND<br>UNITED STATES DEPARTMENT OF AGRICULTURE COOPERATING      |      |              |
| RABBIT HOUSE  |      |              |
| WISC. '75   | 6233 | SHEET 1 OF 2 |
| ORDER NO 729-6233   |      |              |

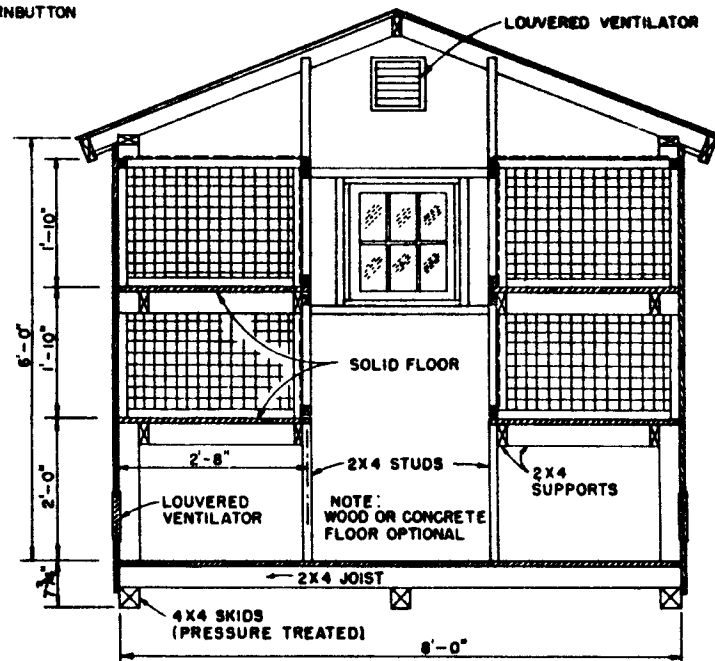
NOTE:  
WHEN POSSIBLE PLACE WIRE  
ON INSIDE OF 2X2 FRAMING  
TO AVOID GNAWING.

WIRE MESH MATERIAL  
HUTCH TOP - 1" X 2" X 16 GAGE  
HUTCH SIDE - 1" X 1" X 14 GAGE  
HUTCH FLOOR -  
1/2" X 1/2" X 14 GAGE (SMALL BREEDS)  
5/8" X 5/8" OR 1/2" X 1" X 14 GAGE (LARGER BREEDS)

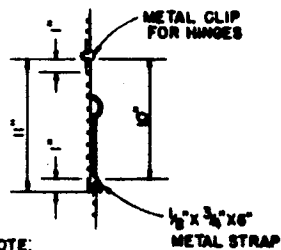
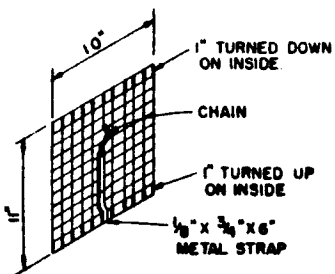


DOOR OPENING MAKE 1" FOLD TOP & BOTTOM

LOOSE PIN HINGES FOR OPENING FRONT AS A DOOR OR TO REMOVE FRONT.

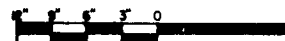
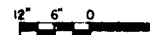


SECTION  
DOUBLE DECK SOLID  
FLOOR HUTCH



NOTE:  
DOOR IS INSIDE FRONT  
SWING DOOR IN AND UP

DOOR DETAILS



COOPERATIVE EXTENSION WORK IN  
AGRICULTURE AND HOME ECONOMICS  
THE PENNSYLVANIA STATE UNIVERSITY  
AND  
UNITED STATES DEPARTMENT OF AGRICULTURE COOPERATING

RABBIT HOUSE

WISC. '75 6233 SHEET 2 OF 2

ORDER NO. 729-6233